

# INSTRUCTION MANUAL

## AAL Profiline wireless socket



### Warning

The use of a call device does not release supervisors from the obligation to supervise the persons supported by such a device. This system is radio-based and must therefore not be used for monitoring purposes if life-threatening conditions are foreseeable.

### Package Contents

Product	Order number <sup>1</sup>	Frequency <sup>1</sup>
AAL Profiline wireless socket	HC-503	869.23 MHz
Instruction manual	HC-503-BA	

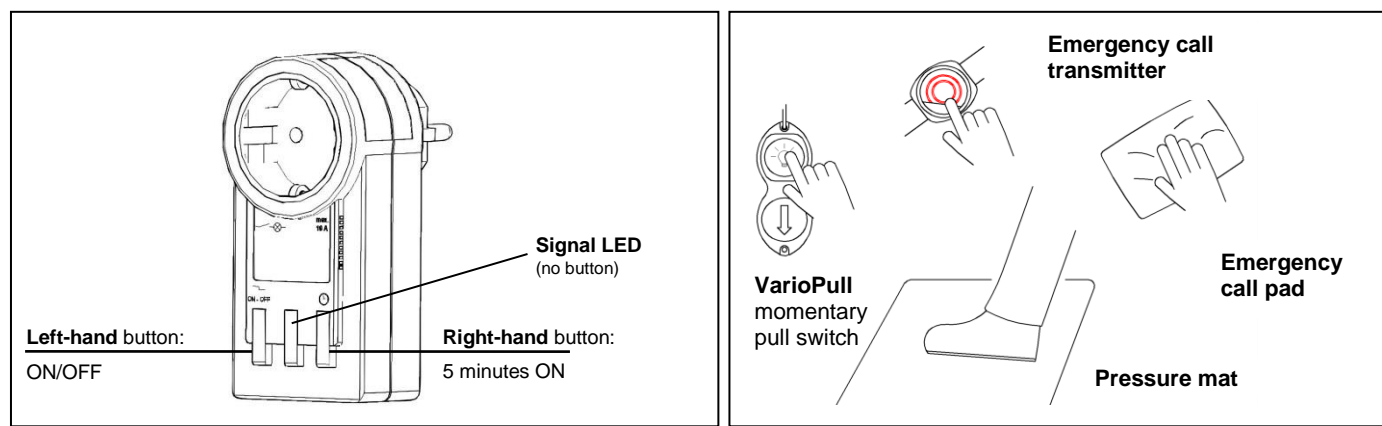
<sup>1</sup>Order number and frequency can be found on the identification decal.

Note: While unpacking, each shipment should be inspected for completeness and damage.

Note: In this manual, the AAL Profiline wireless socket is referred to as "wireless socket".

Fig. 1: wireless socket

Example: selection of compatible transmitters



### Putting into Operation

#### Caution



The wireless socket must not be used as the only switching device of an electric device. The wireless socket is not suited for switching high electric loads! Excessive switching currents may impair the life of the internal switching contacts or result in a loss of breaking capacity. The **maximum** breaking capacity of **10 A** must on no account be exceeded!

#### Usage

#### Warning



The wireless socket is not intended for signalling personal emergency calls. Any use for the purpose of signalling life-threatening conditions is not permitted.

Keep out of reach of children. The wireless socket is de-energised only when the plug is disconnected.

### Programming / Deleting Transmitters to / from the Wireless Socket

The "programming" to the wireless socket required for initial putting into operation is described in Figs. 5 and 6, and the optional "deletion" from the wireless socket is described in Fig. 3.

### Checking the Safe Range of the Radio Link

The range of the matching AAL Profiline transmitters meets the requirements of the technical inspection body of the German health insurance companies. Within buildings, a range of approx. 30 m can be expected. The range depends to a large extent on the local conditions.

Before using the device for the first time, an interference-free operation of the radio link should be ensured. Proceed as follows:

1. Switch **on** all electronic entertainment and communication devices (e.g., television sets, game consoles, and computers) in the immediate vicinity.
2. Check if the radio message is received by the wireless socket at a distance exceeding the intended usage distance by approx. 5 to 10 m. Make sure that the message is triggered by a single radio signal.

### Error Indication

A system fault is indicated by the operating indicator LED flashing **red** and **green**.

If the system fault is caused by another transmitter occupying the frequency band, the operating indicator LED flashes **orange**.

A transmitter "battery low" message is indicated by the LED flashing **orange** and **red**. This signal can be switched off by pressing any button.

### Cleaning

Use of a soft, slightly moist cloth with a small amount of cleaning agent, optionally with disinfecting agents according to DIN/EN 13727, is recommended. Do not use abrasive cleaning agents.

### Regular Measures



#### Caution

Carefully perform the periodic checks. Immediately replace worn / damaged parts. A damaged system or a system not functioning properly must not be used until it has been repaired. Do not open the device.

### Specifications

Operating frequencies:	869.2375 MHz
Operating voltage:	230 V AC
Switching relay:	Single-pole, switching current 10 A, resistive
Indicators:	Signal LED for switching and battery messages
Battery monitoring:	"Battery low" recognition with signal LED indication
Power supply:	230 V mains
Dimensions:	50 x 110 x 40 mm (W x H x D)
Weight:	Approx. 130 g
Protection class:	IP 30
Conformity:	CE (RED directive, RoHS directive)

### Operation / Settings

#### Switching modes

- **Manual operation:** Direct setting of the switch position by the buttons (always possible during operation).
- **Toggle mode:** The ON/OFF switch position changes with each switching signal.
- **5 minutes ON mode:** A switching signal switches the device "**ON**" for approx. 5 minutes. Another radio switching signal retriggers the period of 5 minutes.  
Note: The ON mode may be aborted by one transmitter in toggle mode.

#### Switching off the operating state indicator

- In delivery state, the signal LED emits a steady green light upon plugging of the device. If this is regarded as disturbing, the operating indicator can be switched off. Consequently, the signal LED is **inactive** in the non-operative state!
  - Note: The figures below show the "operating indicator **ON**" mode.

#### Programming mode

- A switching transmitter will always keep the last programmed switching mode!

Figure 2: Manual switching (directly at the device)

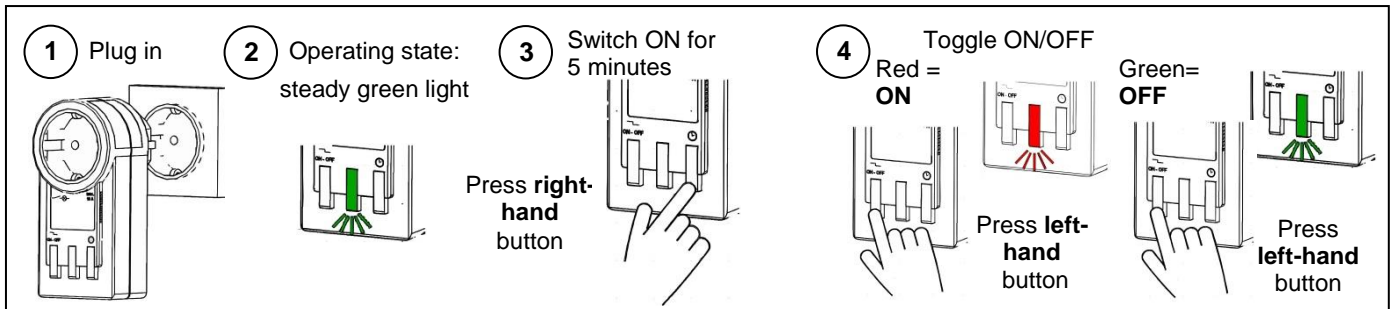


Fig. 3: Deleting all programmed transmitters and resetting to factory settings

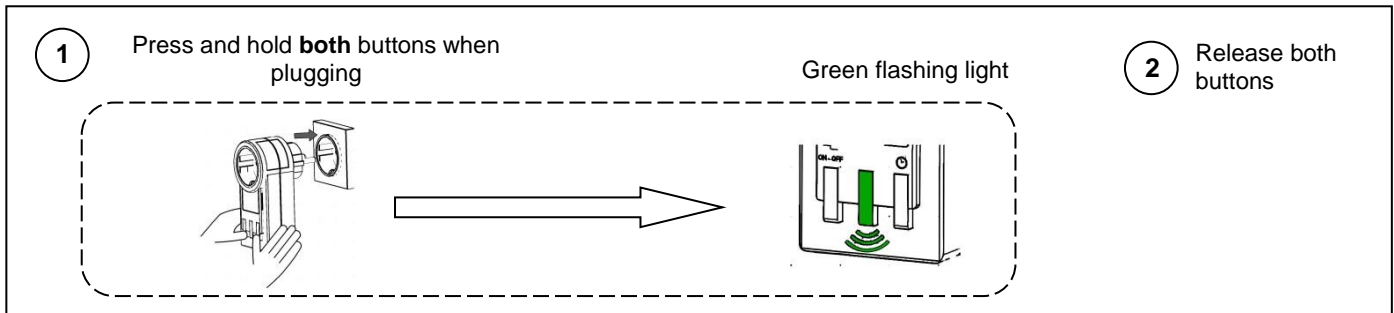


Fig. 4: Deactivating or activating the operating indicator

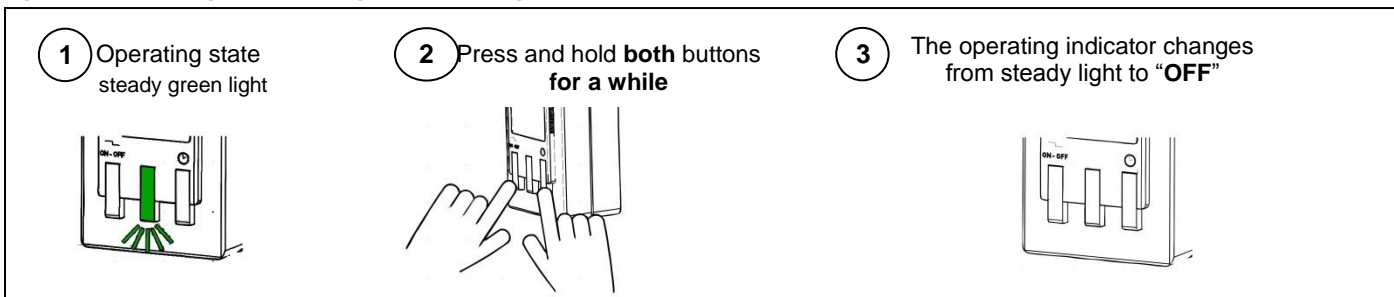
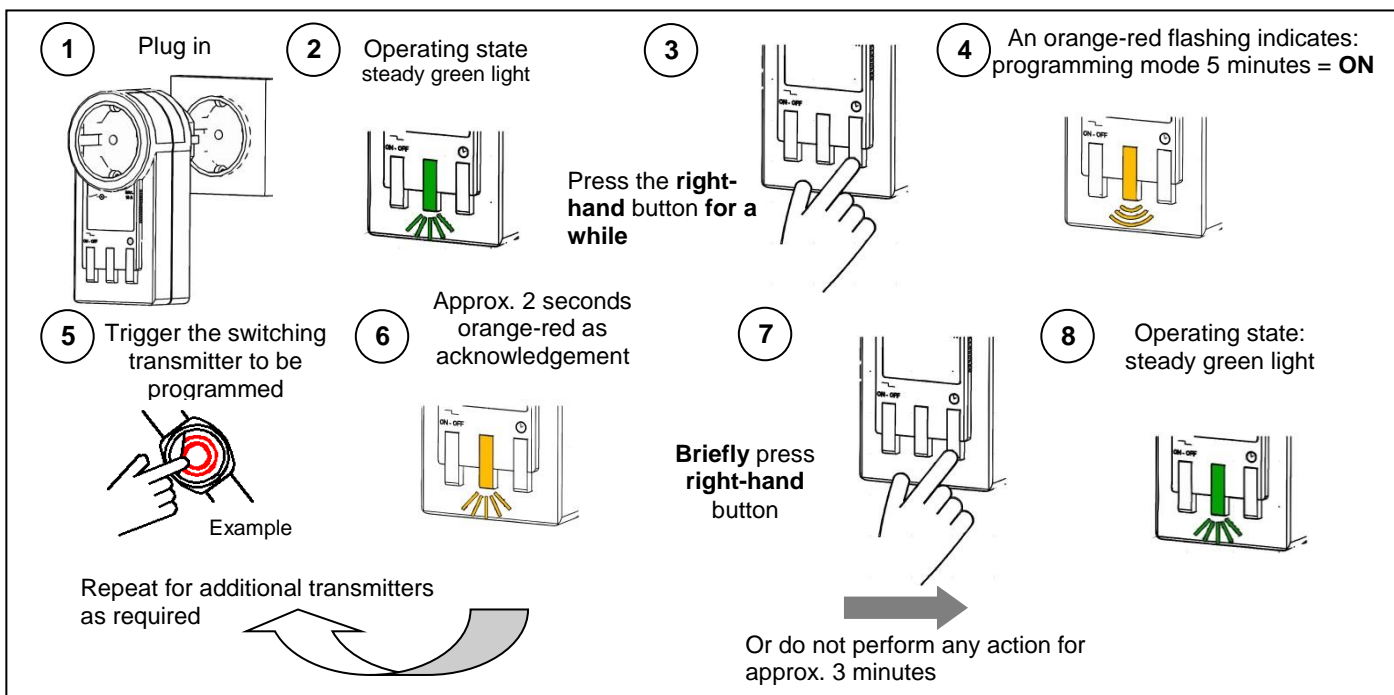
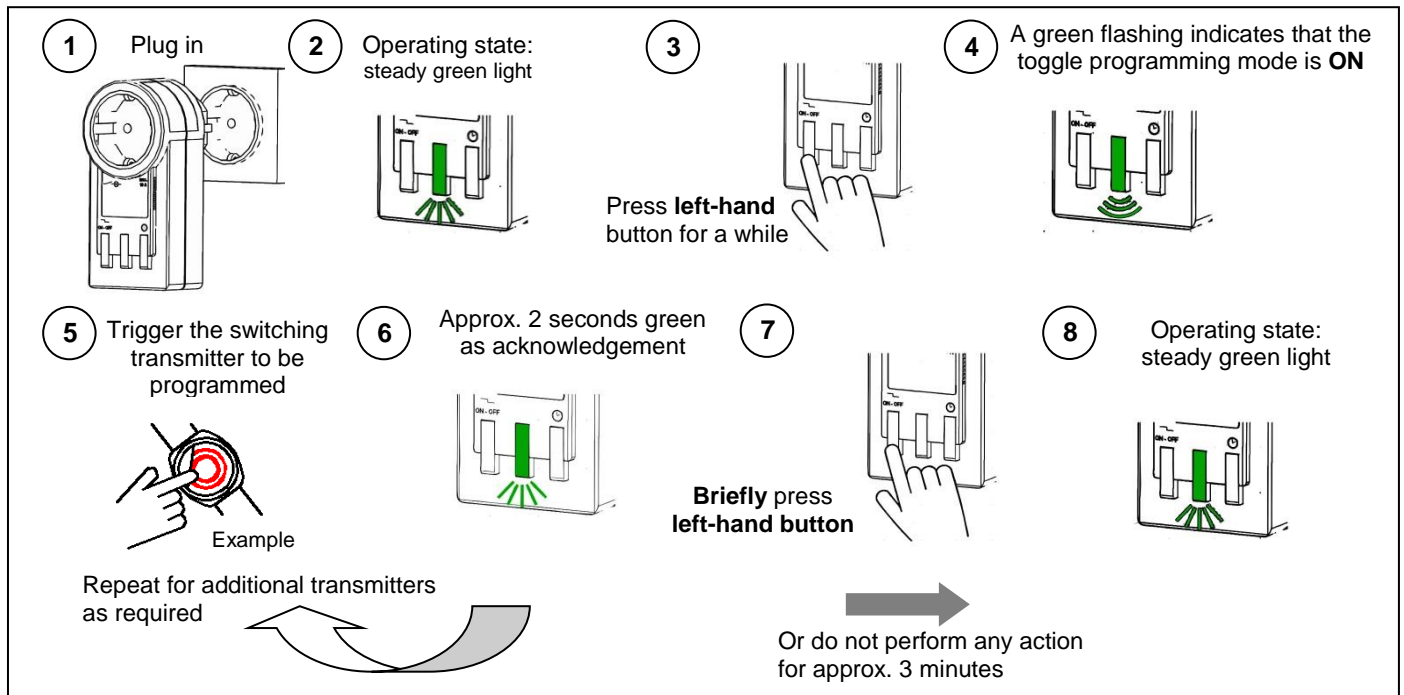


Fig. 5: programming transmitters for the 5 minutes ON mode (triggering by a transmitter activates the output for 5 minutes)



**Fig. 6: programming transmitters for the toggle mode (each transmitter activation results in a change of state)**



### Warranty

The manufacturer shall not be liable for any damage resulting from improper or inappropriate use. During the legal warranty period we shall correct, free of charge, all defects of the device attributable to material or manufacturing defects, either by repair or replacement.

The warranty shall become void in the case of interference by a third party or improper use. The warranty shall not apply to wear and tear of moving and interchangeable parts.

### Service Address

If problems occur despite correct handling or if the product has been damaged, please contact your dealer or the following address:

AAL-Homecare Deutschland - Wahner -Str. 45 - 53859 Niederkassel - Homepage: [www.aal.support](http://www.aal.support)

### Disposal Instructions

Used devices and batteries must not be disposed of together with domestic waste. Dispose of used devices, used batteries and packaging material according to applicable laws and disposal regulations.



### Conformity and Legal Provisions

AAL Homecare declare that, if applicable, the product complies with the essential requirements and the other relevant provisions of the EMC Directive 2014/30/EU, the RED Directive 2014/53/EU and the RoHS Directive 2011/65/EU. You will find the complete declarations of conformity in the Internet under [www.aal-homecare.com](http://www.aal-homecare.com).



**REACH Regulation** Within the meaning of the Regulation we are a downstream user. The product is exempt from the specific labelling requirements of the Regulation.