

INSTRUCTION MANUAL

AAL Profiline alarm receiver



Warning

The use of a call device does not release supervisors from the obligation to supervise the persons supported by such a device. This system is radio-based and must therefore not be used for monitoring purposes if life-threatening conditions are foreseeable.

Package Contents

Product	Order number ¹	Frequency ¹
AAL Profiline wireless alarm receiver	HC-501	869.23 MHz
Instruction manual	HC-501-BA	

¹Order number and frequency can be found on the identification decal.

Note: While unpacking, each shipment should be inspected for completeness and damage.

Note: In this manual, the **AAL Profiline wireless alarm receiver** is referred to as “alarm receiver”.

Fig. 1: alarm receiver

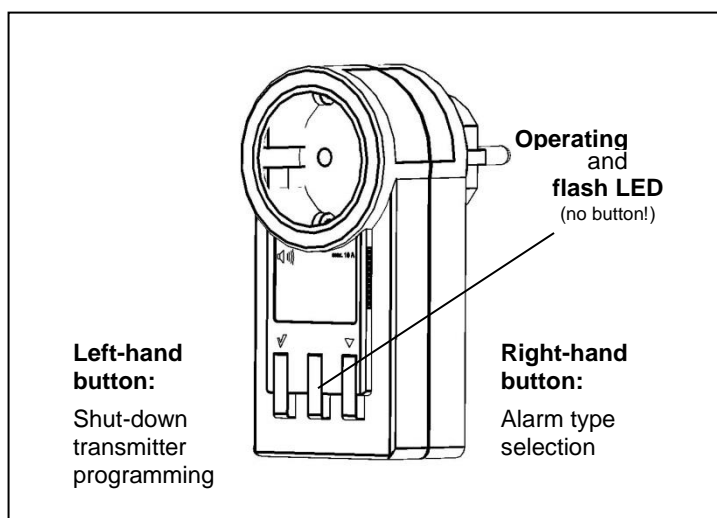
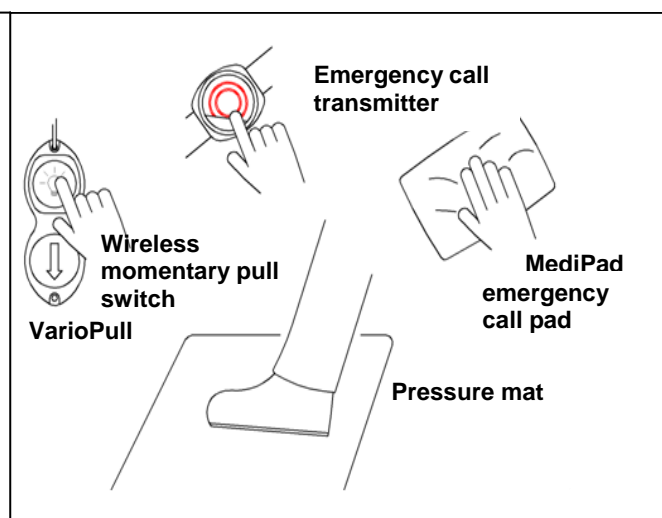


Fig. 2 (example): selection of compatible transmitters



Putting into Operation:

Programming / Deleting Transmitters to / from the Alarm Receiver

The “programming” to the radio receiver required for initial putting into operation is described in Fig. 3, and the optional “deletion” from the radio receiver is described in Fig. 6.

Checking the Safe Range of the Radio Link

The range of the matching AAL Profiline transmitters meets the requirements of the technical inspection body of the German health insurance companies. Within buildings, a range of approx. 30 m can be expected. The range depends to a large extent on the local conditions.

Before using the device for the first time, an interference-free operation of the radio link should be ensured. Proceed as follows:

1. Switch **on** all electronic entertainment and communication devices (e.g., television sets, game consoles, and computers) in the immediate vicinity.
2. Check if the radio message is received by the alarm receiver at a distance exceeding the intended usage distance by approx. 5 to 10 m. Make sure that the message is triggered by a single radio signal.

Transmitters to be Programmed

Generally, transmitters can be programmed as call or shut-down transmitters. The call transmitters (wristband transmitter and/or contact mat, etc., for example) are with the person in need of care. They transmit a call that triggers an alarm in the alarm receiver.

A shut-down transmitter (a necklace transmitter, for example) is with the nursing person; alternatively, it can also be permanently installed within the range of the alarm receiver. If the receiver is difficult to access, a shut-down transmitter allows for externally switching off a triggered call. If an alarm receiver is plugged above a skirting board, for example, it is not required to bend down in order to switch off the call. Shut-down transmitters are provided with green actuating areas which help to identify their functionality.

INSTRUCTION MANUAL

AAL Profiline alarm receiver



Cleaning

Use of a soft, slightly moist cloth with a small amount of cleaning agent, optionally with disinfecting agents according to EN 16615, is recommended. Do not use abrasive cleaning agents.

Regular Measures



Caution

Carefully perform the periodic checks. Immediately replace worn / damaged parts. A damaged system or a system not functioning properly must not be used until it has been repaired. Do not open the device.

Measures

We recommend a weekly inspection including triggering a test call and observing the signal LED message.

Specifications

Operating frequency:	869.2375 (safe social alarm frequency)
Operating voltage:	230 V AC
Indicators:	Signal and flash LEDs for alarm call and battery messages, internal acoustic alarm device
Battery monitoring:	"Battery low" recognition
Dimensions:	50 x 110 x 40 mm (W x H x D)
Weight:	Approx. 130 g
Protection class:	IP 30
Conformity:	CE (RED directive, RoHS directive)

Fig. 3: Programming alarm transmitters¹

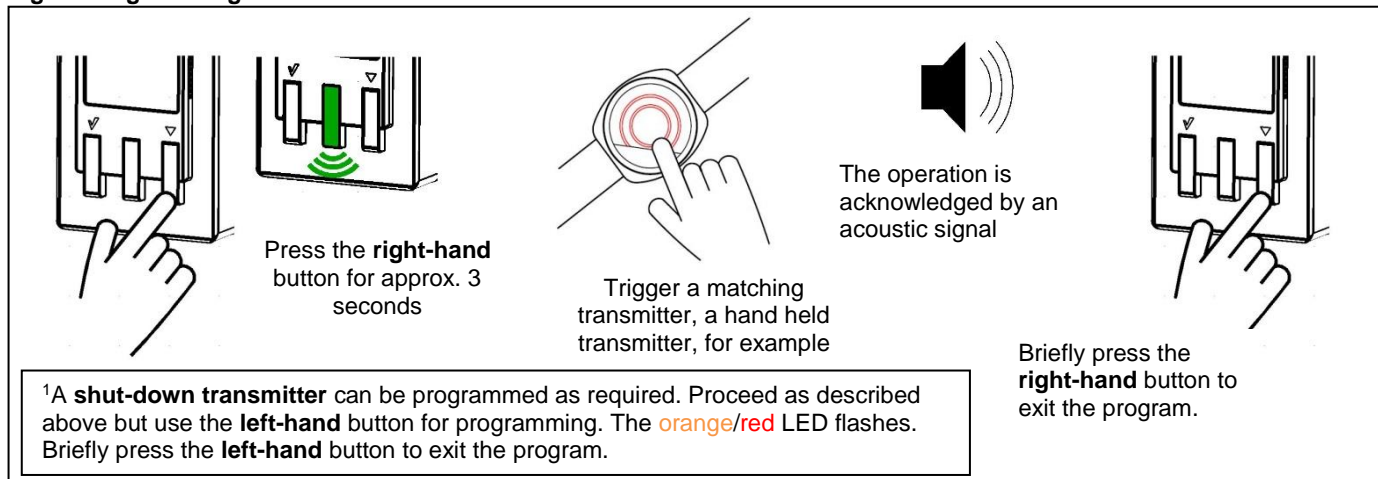


Fig. 4: Setting the signal type

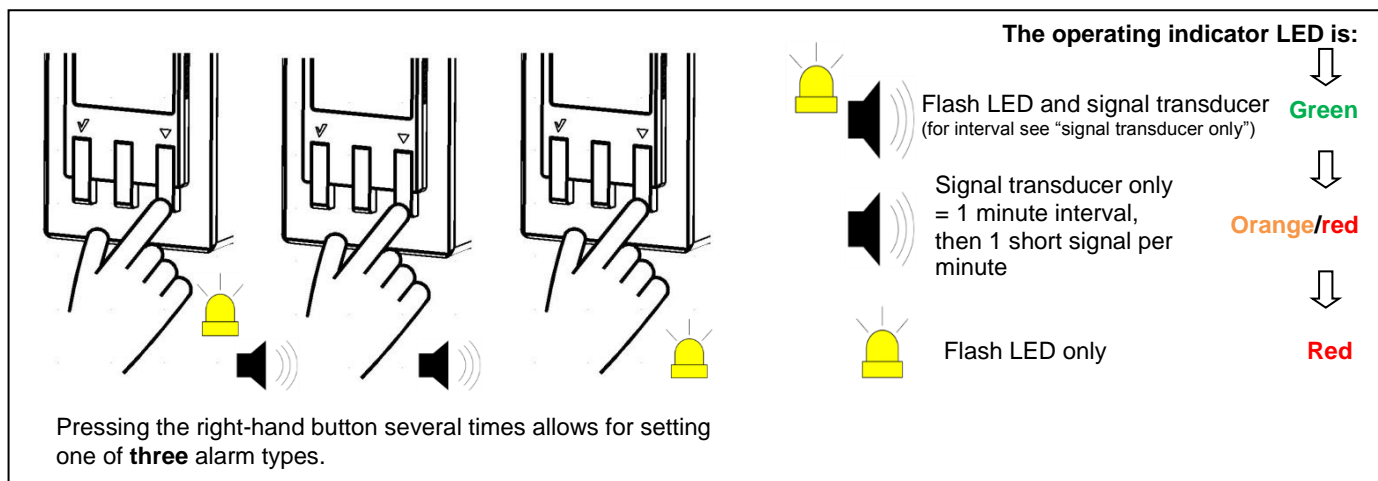


Fig. 5: Switching off a call

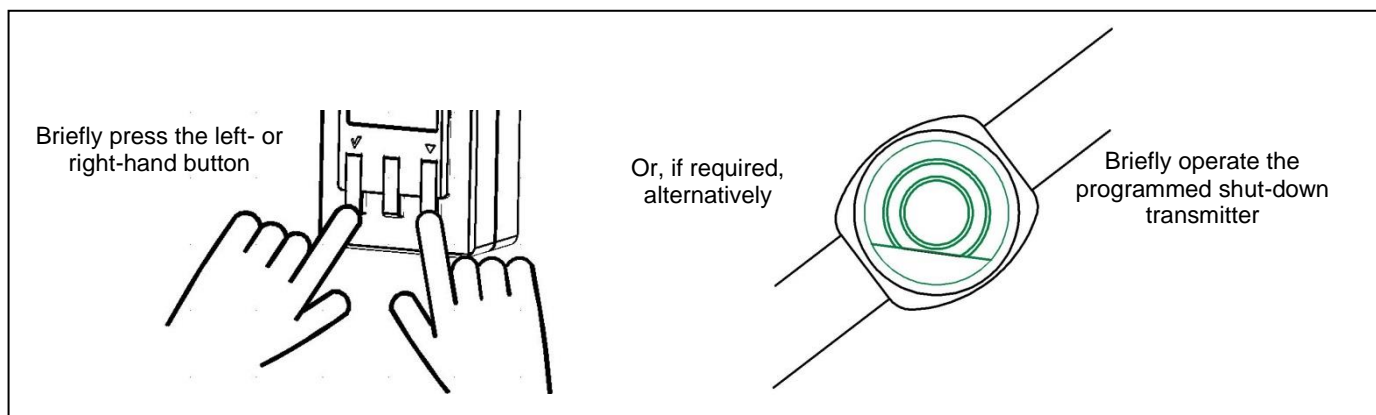
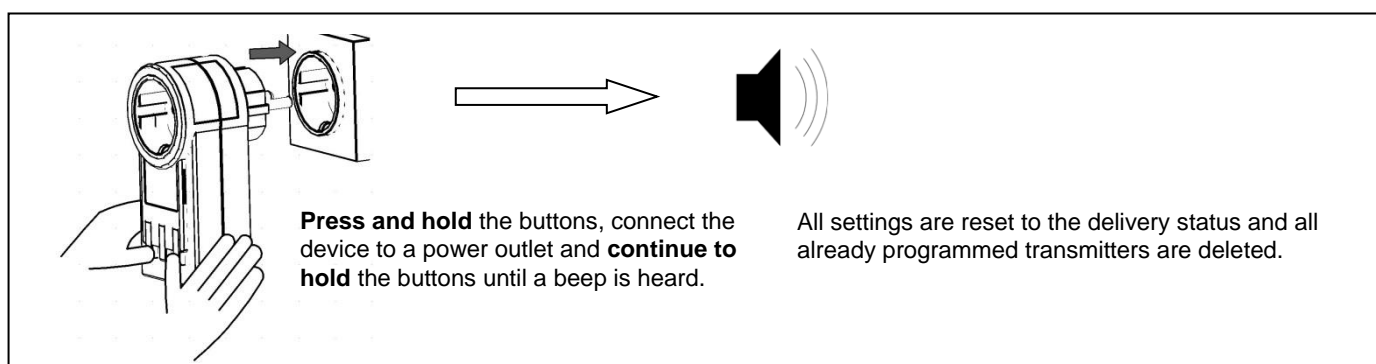


Fig. 6: Deleting all programmed transmitters and resetting all settings to factory settings



Switching Off the Operating Indicator

If the illuminated LED is regarded as disturbing (at night, for example), the green operating indicator LED can be switched OFF by pressing both buttons for approx. 5 seconds. It can be switched ON again by pressing both buttons for approx. 5 seconds.

Error Indication

A system fault is indicated by the operating indicator LED flashing in a **red** and **green** sequence.

If the system fault is caused by another radio signal occupying the frequency band, the operating indicator LED flashes **red**.

A "battery low" message of a programmed transmitter is indicated by the LED flashing **orange** and **red**.

These messages can be switched off by pressing any button.

INSTRUCTION MANUAL

AAL *Profiline* alarm receiver



Warranty

The manufacturer shall not be liable for any damage resulting from improper or inappropriate use. During the legal warranty period we shall correct, free of charge, all defects of the device attributable to material or manufacturing defects, either by repair or replacement.

The warranty shall become void in the case of interference by a third party or improper use. The warranty shall not apply to wear and tear of moving and interchangeable parts.

Service Address

If problems occur despite correct handling or if the product has been damaged, please contact your dealer or the following address:

AAL-Homecare Deutschland - Wahner -Str. 45 - 53859 Niederkassel - Homepage: www.aal.support

Disposal Instructions

Used devices and batteries must not be disposed of together with domestic waste. Dispose of used devices, used batteries and packaging material according to applicable laws and disposal regulations.



Conformity and Legal Provisions

AAL Homecare declare that, if applicable, the product complies with the essential requirements and the other relevant provisions of the EMC Directive 2014/30/EU, the RED Directive 2014/53/EU and the RoHS Directive 2011/65/EU. You will find the complete declarations of conformity in the Internet under www.aal-homecare.com.



REACH Regulation Within the meaning of the Regulation we are a downstream user. The product is exempt from the specific labelling requirements of the Regulation.